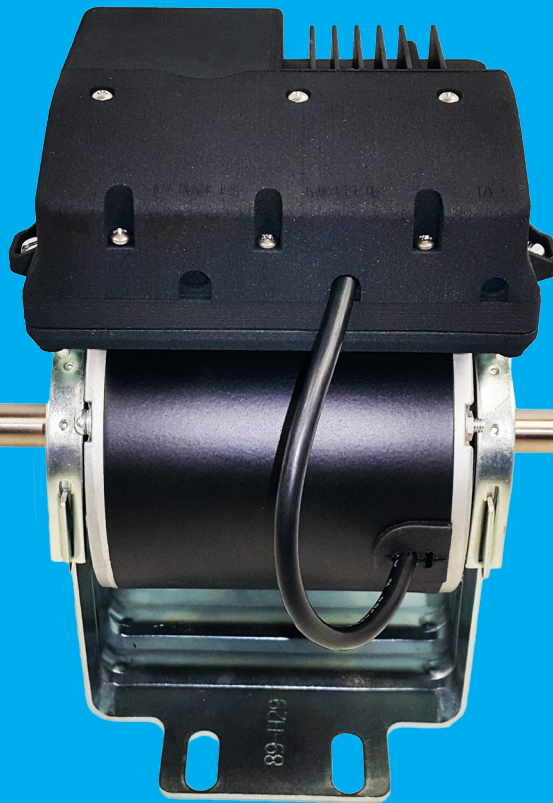


1/6th HP EC MOTOR

The East West 1/6th HP EC Motor, designed for heating, ventilation and air-conditioning systems, not only offers the same impressive energy savings as other EC motors, but also provides tri-voltage (115, 208/230, 277 VAC) compatibility suited for input power systems ranging from 115-277 V, 50/60 Hz in a single motor SKU. This unique design feature, coupled with its small footprint allows you to streamline your operations by reducing the number of motor SKUs in your inventory, ultimately providing more flexibility to adapt to your customer demand.



East West

FEATURES

Controller includes the following standard I/O options:

- High Voltage Switch (115-230-277 VAC) for 3-speed (low, medium, high) operation
- Low Voltage Switch (12-30 VAC or 3.3 - 30 VDC) allowing direct connection to blower speed control units
- 0-10 VDC variable speed control
- PWM (Pulse Width Modulation) variable speed control
- Tachometer output (1 pulse/rev)
- DC output (50 mA max) to power digital inputs when external controller has no supply voltage

Additional unique features of the 1/6th HP Motor include:

- Single blower SKU which can be used for 115, 208, 230 and 277 VAC, 50/60 Hz input applications
- Possible elimination of interface modules when connecting to 3rd party controllers
- Suitable for 1/6 HP and under applications
- Option to remote mount electronics module up to 1 meter away from the motor for ease of field service or applications with limited physical space available

PRODUCT SPECIFICATIONS

ELECTRONIC CONTROL SAFETY FEATURES include self-resetting thermal protection which stops the motor if over heating occurs. The motor will restart when the winding temperature is back within operating range.

DIRECTION OF ROTATION is reversible and can be programmed to counter clockwise SE or clockwise SE.

MOISTURE AND DUST PROTECTION is offered with totally enclosed air over cooled motor that complies with IP43 construction.

FRAME SIZE: 95 mm (see dimensional details)

OPERATING TEMPERATURE is 40°C (104°F)

VOLTAGE RANGE is 115-277 VAC, 50/60 Hz

WEIGHT is 4.5 kg (9.9 lbs)

APPROVALS: UL 1004-1, UL 1004-3, UL 1004-7, UL 60730-1
CAN CSA E60730-1, CSA C22.2 NO. 77-14,
CSA C22.2 No. 100-14

The East West 1/6th HP Motor, designed for heating, ventilation and air-conditioning systems, not only offers the same impressive energy savings as other EC motors, but also provides tri-voltage compatibility suited for input power from 115-277 V, 50/60 Hz.

This unique design feature, coupled with its small frame allows you to streamline your operations by reducing the number of SKUs in your inventory, ultimately giving your customers more flexibility.

74%

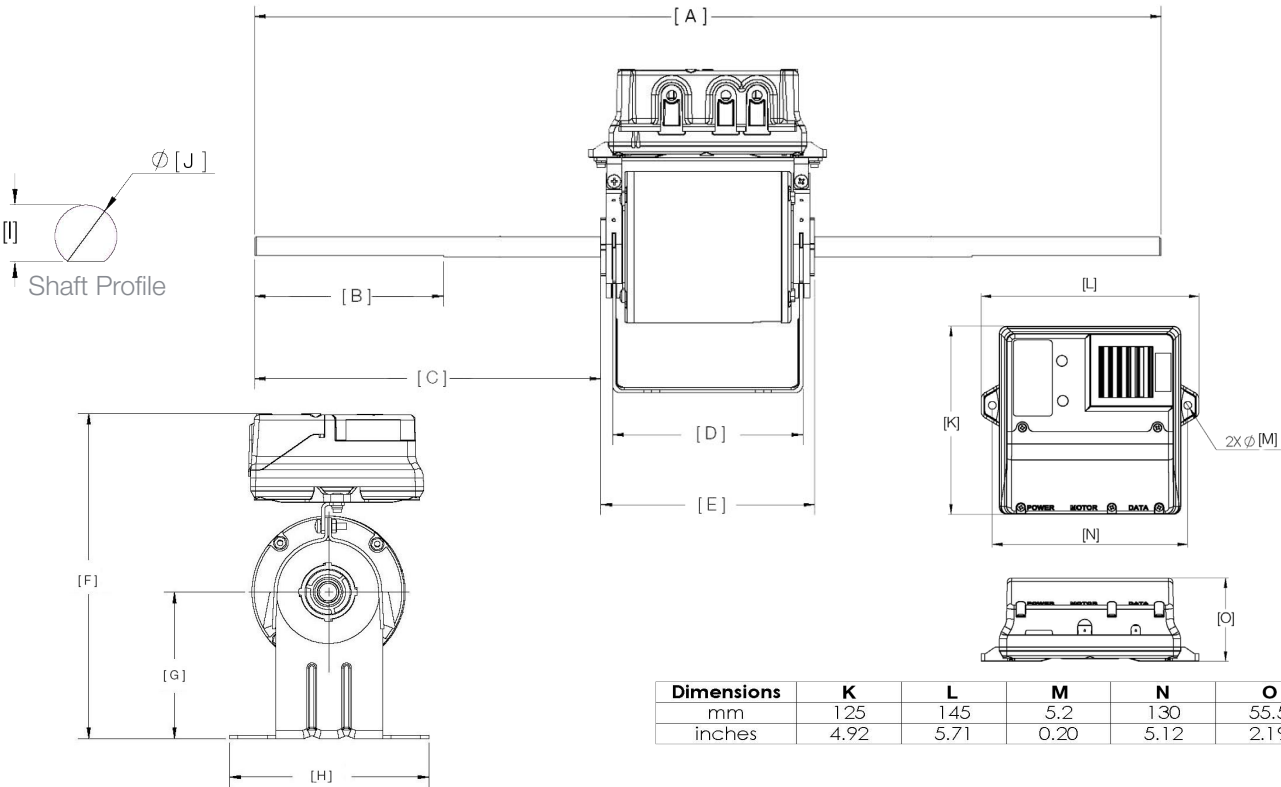
peak efficiency in the 1/6th HP EC Motor versus standard PSC efficiencies of 50-60%

30-40%

increase in efficiency offered, dependent on the application, season and cycling of the unit

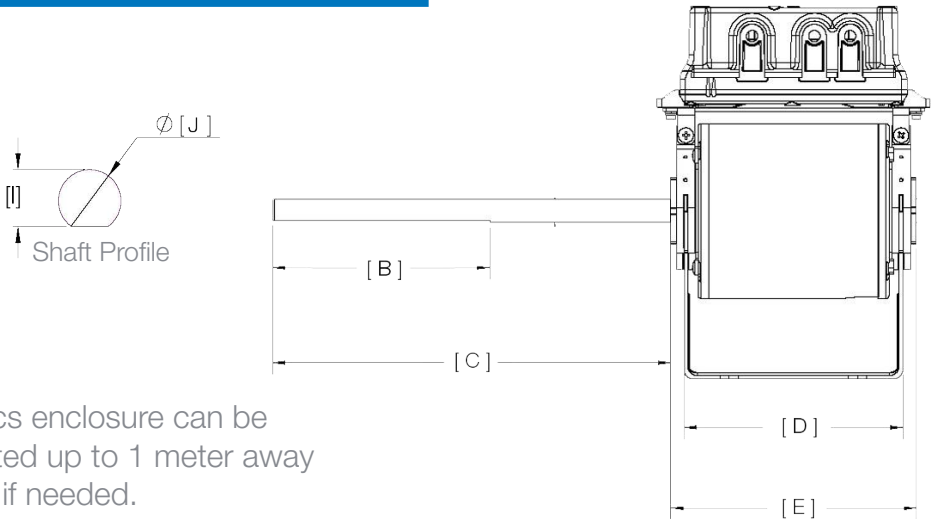


DUAL SHAFT DIMENSIONS



Dimensions	A	B	C	D	E	F	G	H	I	J
mm	552	115	210.90	116	130.09	197.50	89	121	11.50	12.7
inches	21.73	4.53	8.30	4.57	5.12	7.78	3.50	4.76	0.45	0.50

SINGLE SHAFT DIMENSIONS




Note: Electronics enclosure can be remotely mounted up to 1 meter away from the motor if needed.



Get in Touch

To learn more about the 1/6th HP EC Motor or East West Manufacturing, you can visit our website or schedule a meeting with **Dave Purvis, Director of Motor Business Development.**

 404-210-9292

 dpurvis@ewmfg.com

 www.ewmfg.com



East West
design • manufacturing • distribution